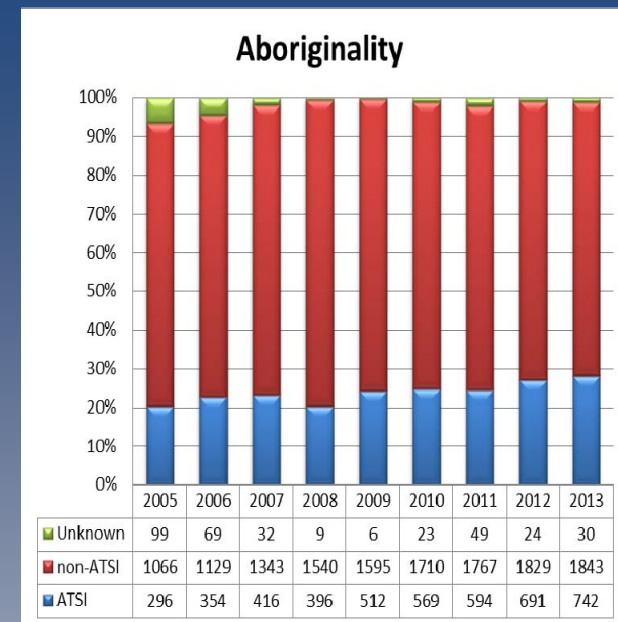
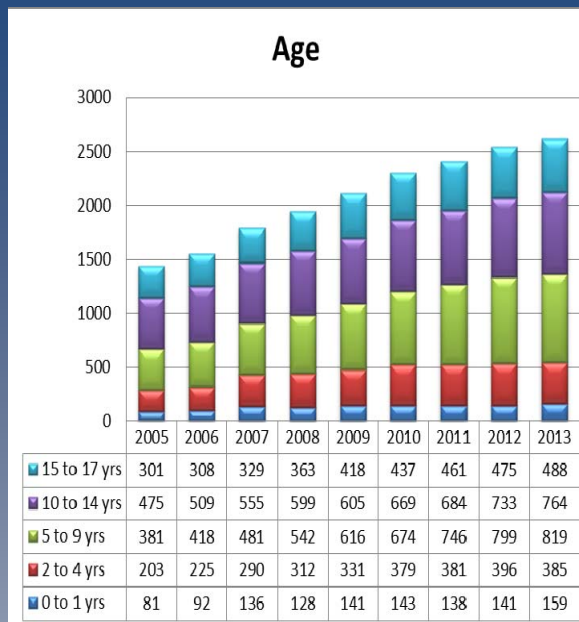
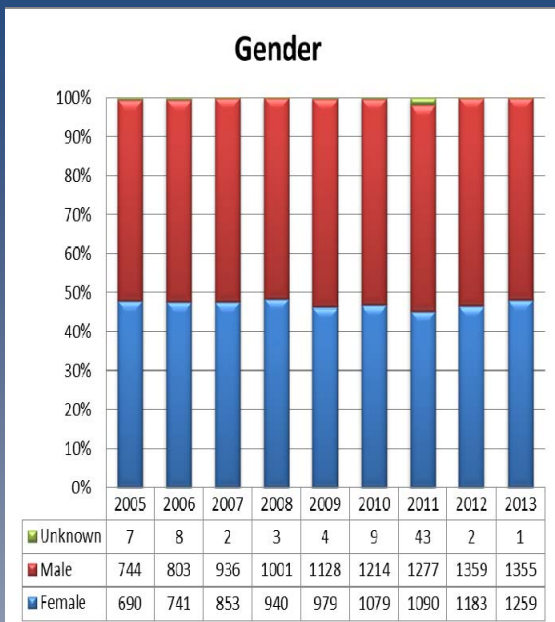
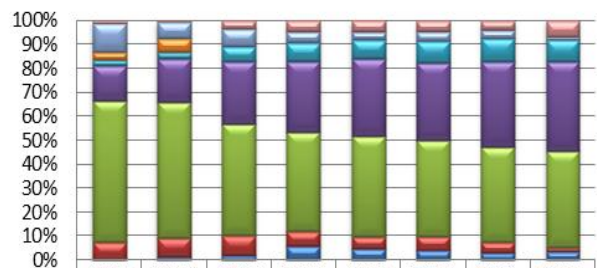


Young people in state care and custody in South Australia

At June 30 2013 there were 2,615 young people in the guardianship of the SA Minister for Education and Child Development.¹

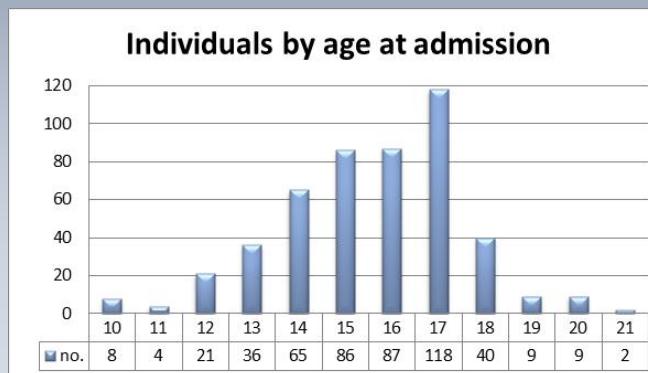
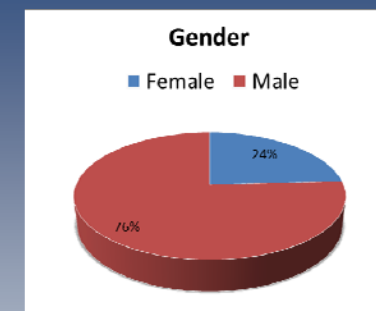
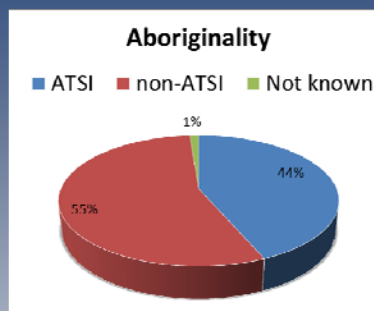


Living arrangements (AIHW specification)²



	2005	2006	2007	2008	2009	2010	2011	2012
Other/unknown	17	6	66	103	113	114	101	176
Independent living	190	115	133	101	76	101	96	38
Family group homes	49	94						0
Community residential care	36	46	120	166	181	227	256	247
Relatives/kin (paid)	227	304	495	654	762	823	933	1000
Foster Care	914	948	874	911	993	1020	1035	1077
Relative/kin (unpaid)	112	134	152	136	122	154	119	49
Parents	8	24	41	126	114	104	80	93

In the period 1 July 2012 to 30 June 2013, 973 admissions were made to youth justice facilities in South Australia which involved 485 individual young people. At the time of admission, their characteristics were as follows:



1. Figures supplied by Families SA.
2. AIHW data refers to a similar but not identical population to Families SA data due to different counting rules. June 2013 data becomes available in June 2014.

