



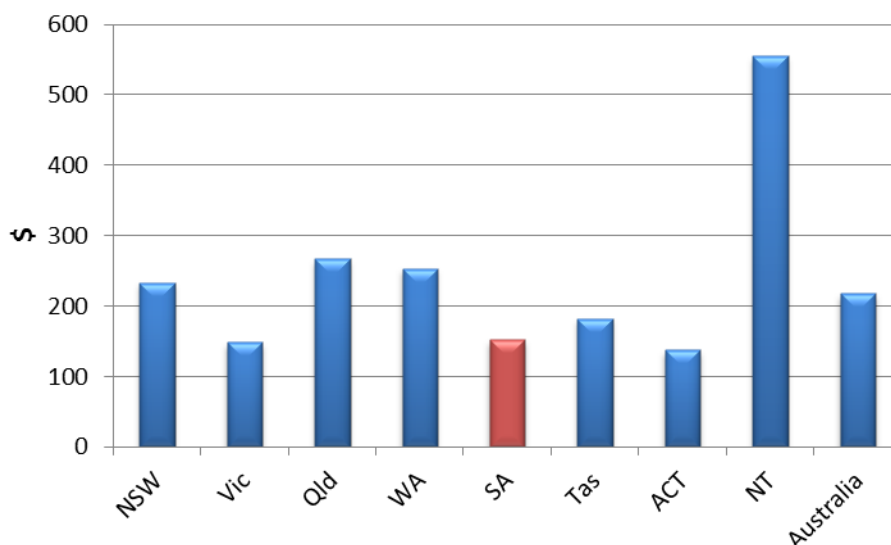
Expenditure on child protection, out-of-home care and intensive family services, 2004-05 to 2013-14

As part of its monitoring function, the Office of the Guardian tracks changes in South Australian Government expenditure on areas critical to the wellbeing of children who have contact with the statutory child protection system. While expenditure *alone* is not a good indicator of how well or how poorly we are looking after children in need of protection, it is important. Both skills *and* budgets are essential to our capacity to meet goals in child protection and wellbeing. And some of the present weaknesses can be traced back decades to decisions about limiting expenditure. The charts below represent some of the information on government expenditure.

The 'per child' rate is the rate for all children, not limited to those who receive services.

CHART 1: Real recurrent expenditure *per child* on child protection services, 2013-14

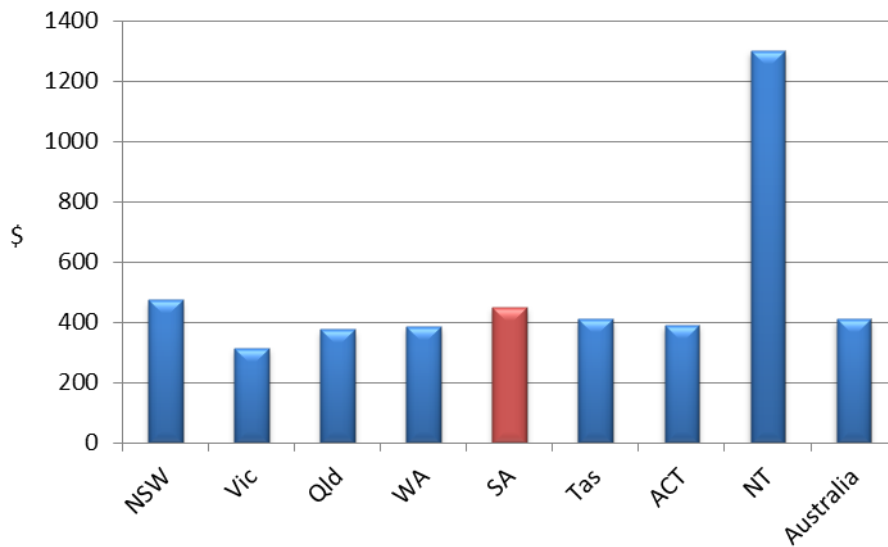
Source: Productivity Commission, Report on Government Services 2015



Expenditure on child protection per child in SA in 2013-14 was the third lowest of all states and territories (after ACT and Victoria); 70 per cent of the overall Australian rate.

CHART 2: Real recurrent expenditure *per child* on out-of-home care, 2013-14

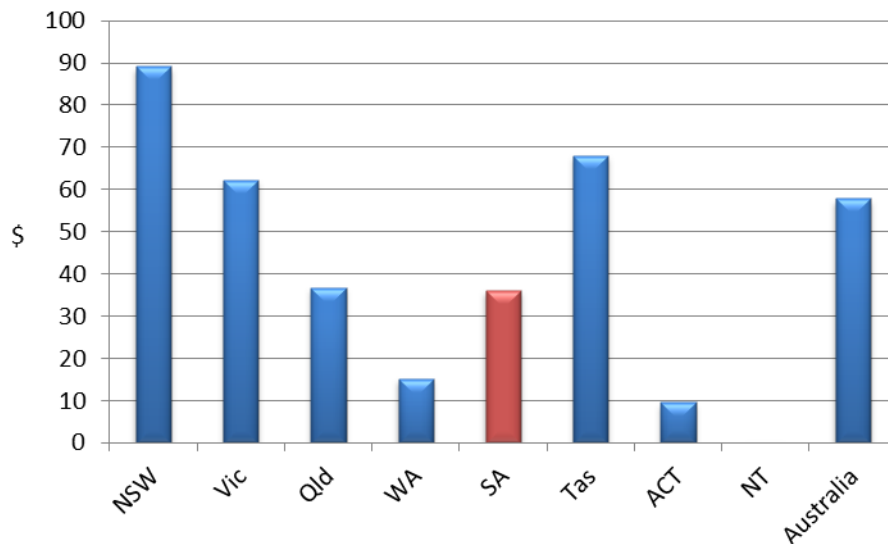
Source: Productivity Commission, Report on Government Services 2015



Expenditure on out-of-home care per child in 2013-14 was above the overall Australian rate.

CHART 3: Real recurrent expenditure *per child* on intensive family services, 2013-14

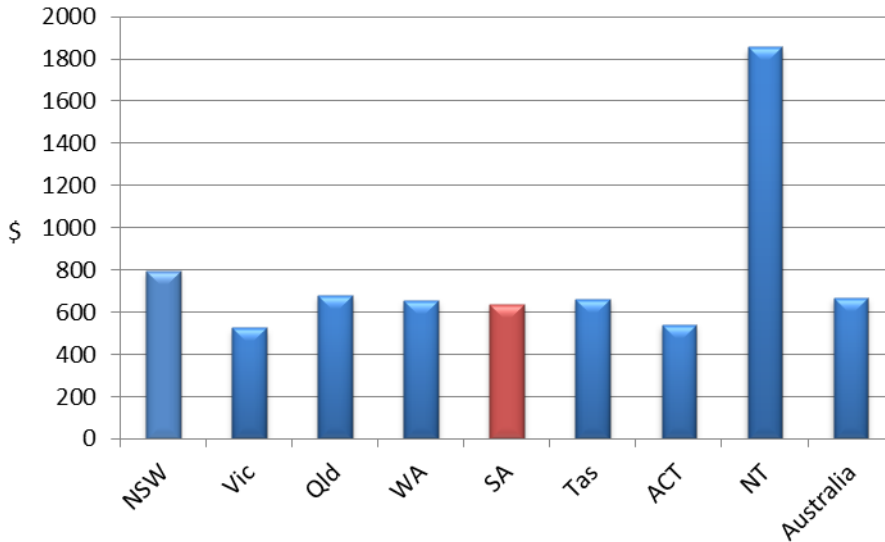
Source: Productivity Commission, Report on Government Services 2015



Expenditure on intensive family services per child in 2013-14 was 62 per cent of the overall Australian rate.

CHART 4: Real recurrent expenditure *per child* on child protection services, out-of-home care and intensive family support services, 2013-14

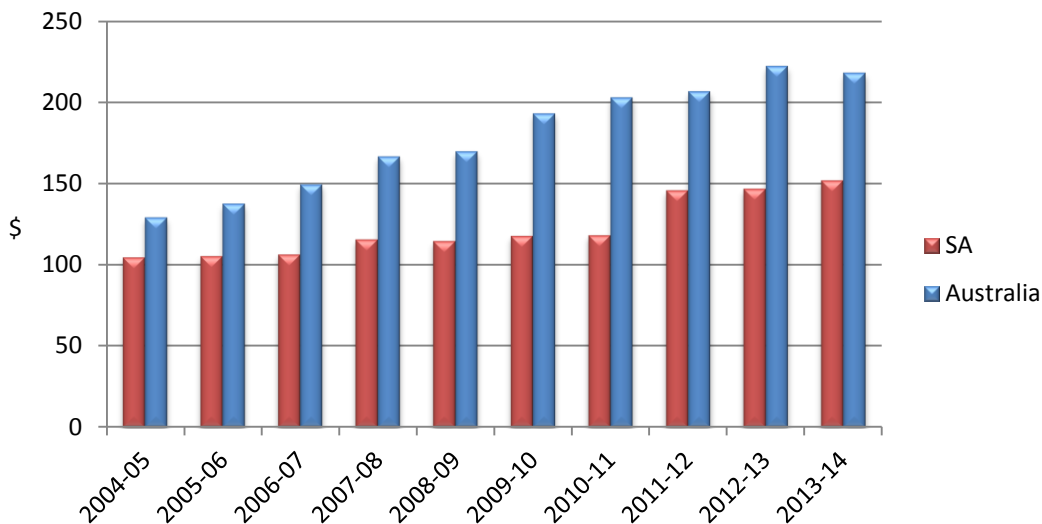
Source: Productivity Commission, Report on Government Services 2015



When combined, the SA expenditure on child protection, out-of-home care and intensive family support services was 95 per cent of the overall Australian rate.

CHART 5: Real recurrent expenditure *per child* on child protection services, 2004-05 to 2013-14, SA and Australia

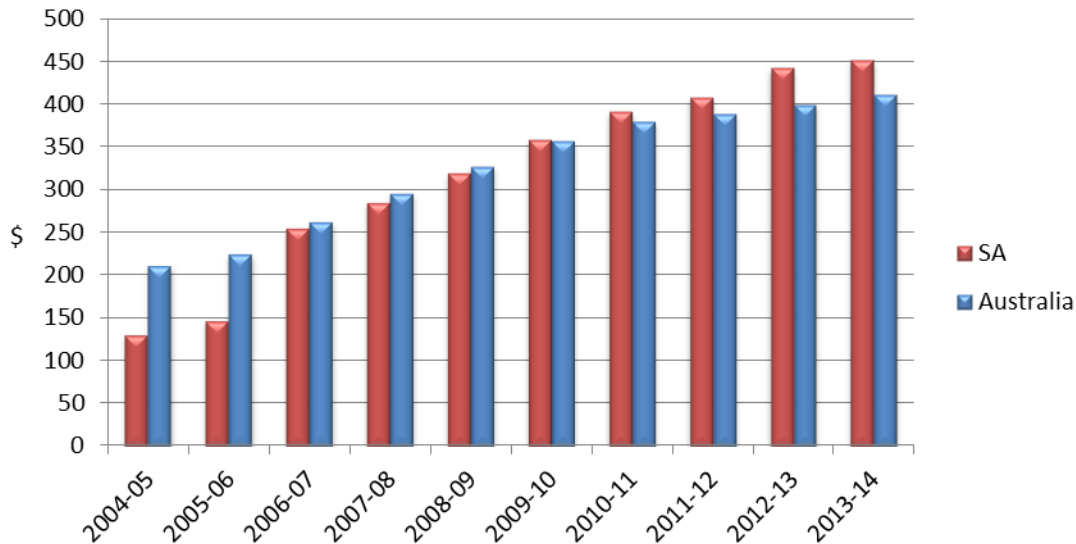
Source: Productivity Commission, Report on Government Services 2015



In the ten year period from 2004-05, SA has increased expenditure on child protection services per child by 45 per cent. The increase overall in Australia was 69 per cent.

CHART 6: Real recurrent expenditure *per child* on out-of-home care, 2004-05 to 2013-14, SA and Australia

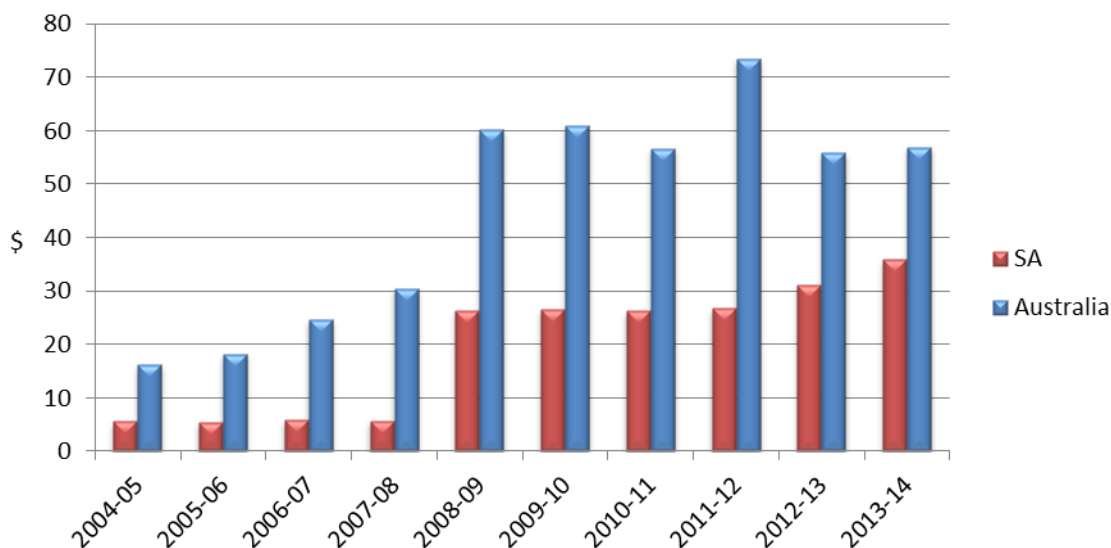
Source: Productivity Commission, Report on Government Services 2015



In the ten year period from 2004-05, SA has increased expenditure on out-of-home care per child by 245 per cent. The increase overall in Australia was 95 per cent.

CHART 7: Real recurrent expenditure *per child* on intensive family support services, 2004-05 to 2013-14, SA and Australia

Source: Productivity Commission, Report on Government Services 2015



In the ten year period from 2004-05, SA has increased expenditure on intensive family support services per child by 540 per cent. The increase overall in Australia was 247 per cent. These figures should be treated with caution because of the uncertainty among all states about what is counted.